

IF YOU NEED ANY HELP IN DETERMINING WHAT FUSE YOU NEED  
CONTACT NATIONAL FUSE PRODUCTS  
PHONE: 1-800-328-0496  
EMAIL: SALES@NATIONALFUSE.COM



# 660HTP

Fast acting fuse — For protection of semiconductor devices

## Features

- ◇ Center blade, screw installation type
- ◇ Compatible with 660GH series products
- ◇ RoHS Compliant

## Specifications & Dimensions

Rated voltage & breaking capacity:



- <UL> AC660V -10kA / DC660V-10kA (L/R=2ms)  
Minimum breaking current : AC/DC 660V 8 times the rated current
- <CCC> AC660V-50kA / DC450V-50kA (L/R=15ms)  
Minimum breaking current : AC660V 8 times the rated current  
DC450V 5 times the rated current

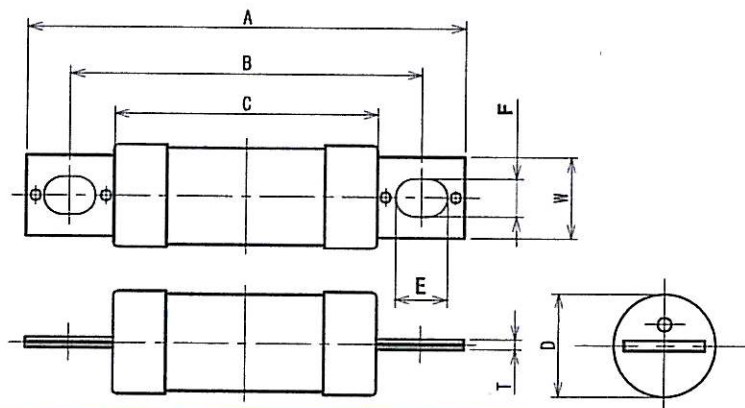
Maximum arc voltage : 1500V

### Caution!

- ※ Arc re-ignition may occur if the fusing current is less than 7 times larger than the fuse rated current at DC660V, or less than 5 times larger than the fuse rated current at DC450V. In this case, the fuse should be used in conjunction with other protectors.
- ※ Fuse should be used at less than 60% of the rated current.



Type	Rated Amperage (A)	Fusing Ft (A²S)	Shutdow n Ft (A²S) at AC660V-50kA	Power Loss (W)	Weight (g)	Dimensions (mm)								Standard Approved	
						A	B	C	D	E	F	T	W		
660HTP32ULTC	32	75	1200	8	37	76	61	46	18	9	6.5	1.7	14	 (UL file No E143197)	
660HTP50ULTC	50	300	4500	10								1.8			
660HTP75ULTC	75	670	10000	17											
660HTP100ULTC	100	1200	18000	24											
660HTP125ULTC	125	2700	30000	27	82	100	77	50	26	12	9	3.1	20		
660HTP160ULTC	160	4800	53000	30											
660HTP200ULTC	200	6100	65000	48	145	110	82	50	32	16	10.5	3.1	32		
660HTP250ULTC	250	10800	150000	56											
660HTP300ULTC	300	16800	200000	72											
660HTP350ULTC	350	25000	320000	79	290	110	81	50.4	46	16	11	3.1	36		
660HTP400ULTC	400	33000	400000	111								3.2			
660HTP450ULTC	450	59000	650000	100											



For inquiries, please contact our sales department at;  
Tel: 03-3860-8661 Fax: 03-3860-8660 E-mail: [uketsuke@hinodedenki.co.jp](mailto:uketsuke@hinodedenki.co.jp)

All specified data in this leaflet is based on available information at the time of publication, and the products and/or specifications may be subject to change without notice.

We recommend that all our customers check the latest product information on our web site ([http:// www.hinodedenki.co.jp](http://www.hinodedenki.co.jp)) as well as contacting us before placing orders.

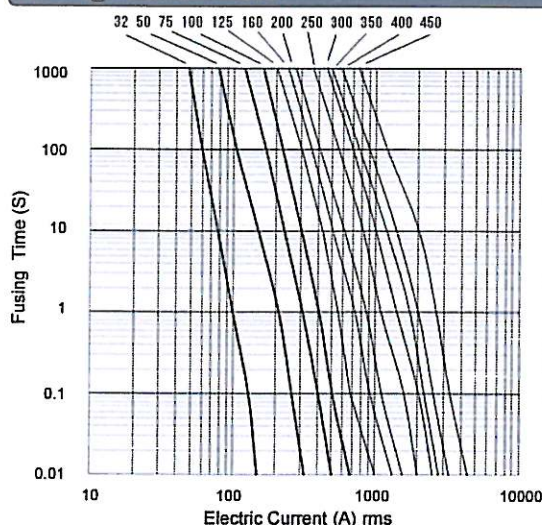


# 660HTP

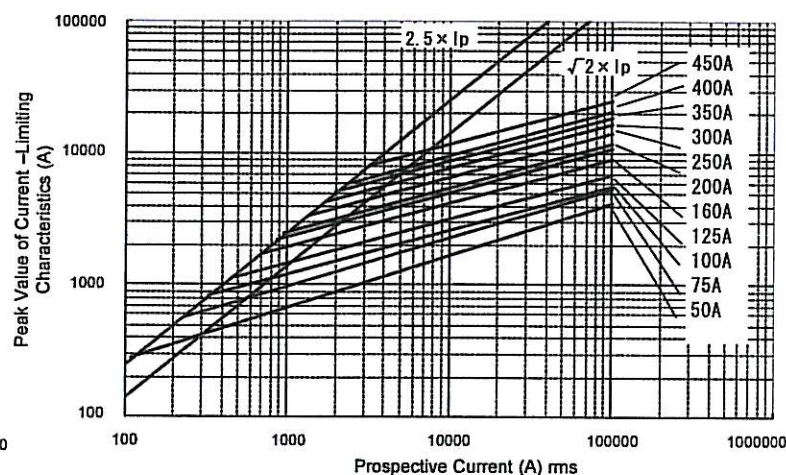
Fast acting fuse — For protection of semiconductor devices



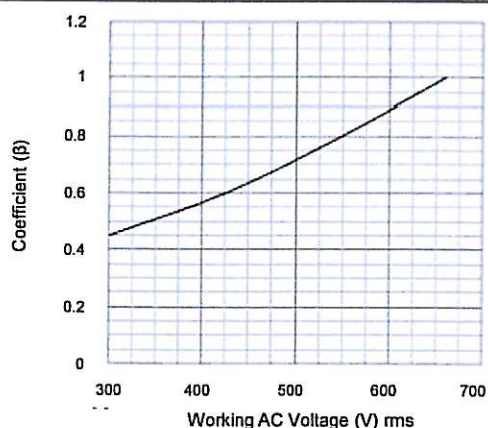
Fusing Characteristics



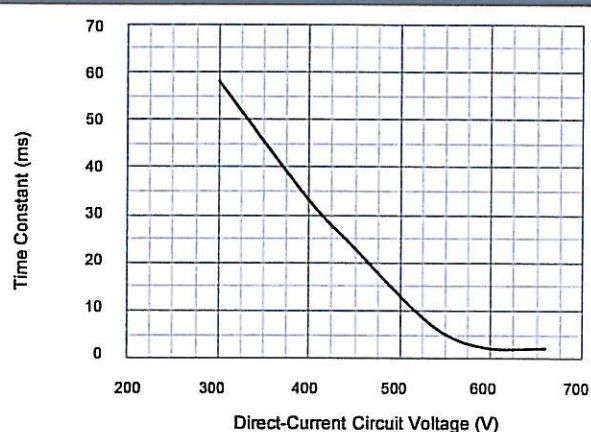
Current-Limiting Characteristics



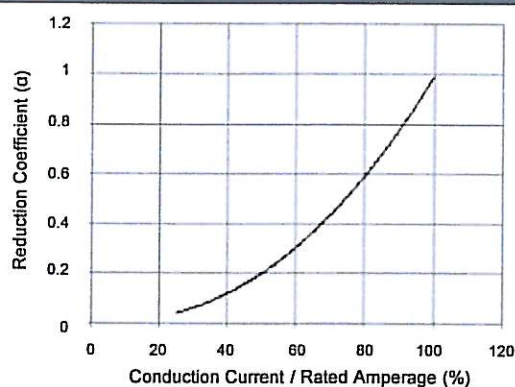
Shutdown  $I^2t$  Against Working AC Voltage



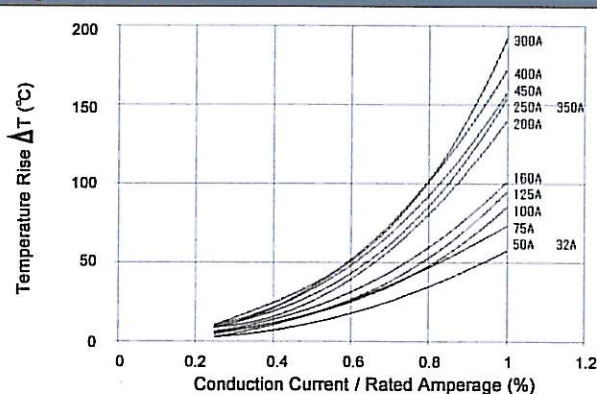
Application to Direct-Current Circuit



Power Loss



Temperature Rise



For inquiries, please contact our sales department at;  
Tel: 03-3860-8661 Fax: 03-3860-8660 E-mail: [uketsuke@hinodedenki.co.jp](mailto:uketsuke@hinodedenki.co.jp)

All specified data in this leaflet is based on available information at the time of publication, and the products and/or specifications may be subject to change without notice.

We recommend that all our customers check the latest product information on our web site (<http://www.hinodedenki.co.jp>) as well as contacting us before placing orders.